



Part Number MET0000171

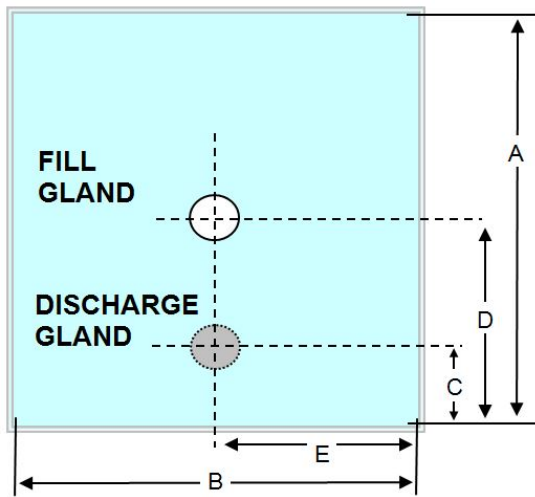
500/2x2BV LLDPE

500 LTR Liquid Pillow Liner
 3 PLY 60mu LLDPE film.

Description

500 LTR 3 PLY 60mu LLDPE. Available in clear or blue.
 Fill gland: 2" BSP(F) (square) c/w cap and 'o' ring.
 Discharge: 2" Butterfly Valve S60 Buttrass thread (square) c/w cap and handle.

Manufactured under the following conditions:-
 Metano is a **BRC grade A** approved manufacturer, certified to BRC Global Standard for Packaging and Packaging Materials (High Hygiene) Issue 4. The products are produced in a validated ISO8 clean room.



| | |
|------------------|------------------|
| Volume | 500Ltr |
| Ply | 3 |
| Inner | 1 x 1800mm LLDPE |
| Inner Micron | 60mu +/- 10% |
| Outer | 1 x 1800mm LLDPE |
| Outer Micron | 60mu +/- 10% |
| Int | 1 x 1800mm LLDPE |
| Int Micron | 60mu +/- 10% |
| Dimension A | 2200 |
| Dimension B | 1754 |
| Dimension C | 450 |
| Dimension D | Centre |
| Dimension E | Centre Line |
| Destruction Test | 1 in 100 |
| Gland Weld Width | 8mm |
| Liner Weld Width | 8mm |

Applications

500/2x2BV Pillow liners are the most cost effective solution for high volume products such as:

Chemical



Metano Limited. Units 14/15 Winfield Industrial Estate
Rowlands Gill, Tyne & Wear, United Kingdom. NE39 1EH
T: +44 (0) 01207 549 448 F: +44 (0) 01207 549 447
E: sales@metano.com W: www.metano.com

Adhesives, automotive lubricants, automotive oils, chemicals, coatings, drilling additives, detergents, inks, paints, polymer emulsions.

Cosmetic

Shower gell, conditioner, cream, lipstick, liquid makeup, lotion, mascara, shampoo, facial scrubs.

Food & Beverage

Cream, SCM (sweetened condensed milk), fruit juice, edible oils, fish oil, fructose, jams, liquid egg, malts, molasses, pastes, sweeteners, syrups, vinegar, juice, wine, milk.

Pharmaceutical

Manufactured under the following conditions:-

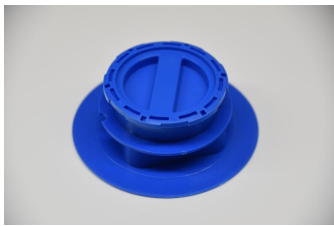
Inside a Validated ISO8 Clean Room

BRC Global Standard for Packaging and Packaging Materials Issue 4

Metano is a **BRC grade A** approved manufacturer, certified to BRC Global Standard for Packaging and Packaging Materials (High Hygiene) Issue 4. The products are produced in a validated ISO8 clean room.



Metano Limited. Units 14/15 Winfield Industrial Estate
Rowlands Gill, Tyne & Wear, United Kingdom. NE39 1EH
T: +44 (0) 01207 549 448 F: +44 (0) 01207 549 447
E: sales@metano.com W: www.metano.com



2" Gland Assembly - FILL
Comprises of
MET0000208 2" BSP Male Plug (Blue) LLDPE
MET0000194 2" Blue Nitrile 'O' Ring 53.64mm x 2.62mm
MET0000241 2" BSP Female Square Gland BLUE LLDPE

MET0000261



2" / S60 Disposable Butterfly Valve.

MET0000172