

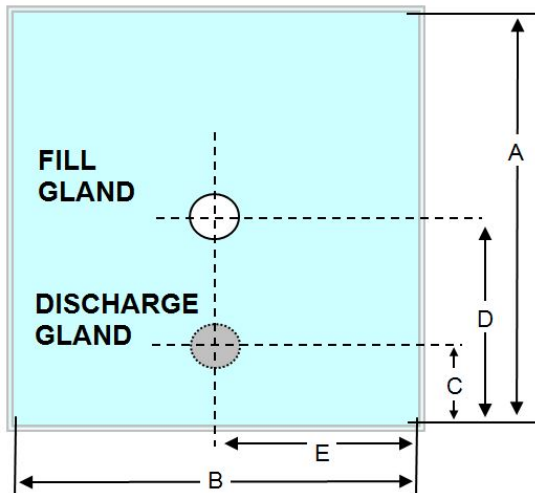


**Part Number MET0000449**

1000 LTR 3 PLY, 2 x 60mu LLDPE (inner and intermediate) 1 x 60mu EVOH (outer). 1% Blue Tint  
 Fill gland: 1" Aseptic Fill with 900mm x 350mm trunk  
 Discharge: 2" Butterfly Valve DN50 thread (square) c/w cap, oring and folding handle.

Metano is a **BRC grade A** approved manufacturer, certified to BRC Global Standard for Packaging and Packaging Materials (High Hygiene) Issue 4. The products are produced in a validated ISO8 clean room.

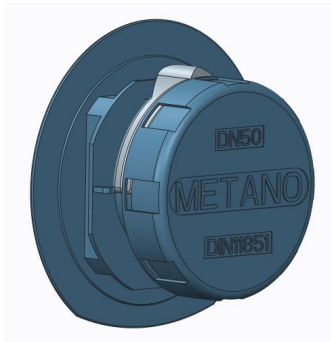
**Description**



Volume	500Ltr
Ply	3
Inner	1 x 2200mm LLDPE
Inner Micron	60mu +/- 10%
Outer	1 x 2200mm EVOH
Outer Micron	60mu +/- 10%
Int	1 x 2200mm LLDPE
Int Micron	60mu +/- 10%
Dimension A	3600
Dimension B	2140
Dimension C	630
Dimension D	3500 (100MM FROM TRUNK TOP)
Dimension E	Centre Line
Destruction Test	1 in 100
Gland Weld Width	8mm
Liner Weld Width	8mm



**Metano Limited.** Units 14/15 Winfield Industrial Estate  
Rowlands Gill, Tyne & Wear, United Kingdom. NE39 1EH  
T: +44 (0) 01207 549 448 F: +44 (0) 01207 549 447  
E: sales@metano.com W: www.metano.com



**DN50 Disposable Butterfly Valve LLDPE Blue**

**MET0000441**



**2" Combo Clip.**

**MET0000089**



**1 Inch Aseptic fill gland**

**MET0000413**