



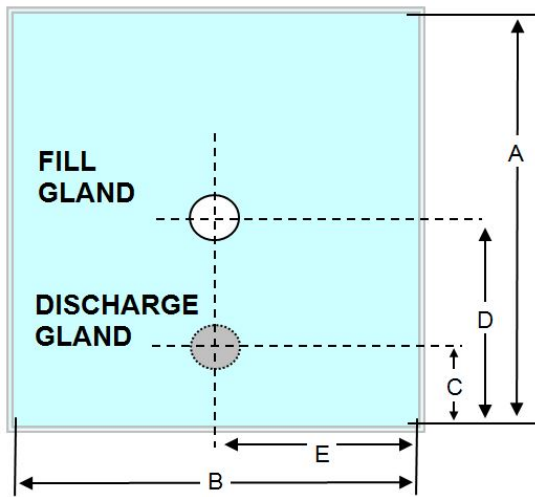
Part Number MET0000273

500/2x2CM MET PET

500 LTR Liquid Pillow Liner
 2 PLY 60mu Clear LLDPE film.
 1 PLY 60mu MET PET film.

Description

500 LTR Liquid Liner 3 PLY 60mu Clear LLDPE film with Intermediate Metalised Polyester Barrier.
 Fill gland: 2" BSPF (square) c/w cap and oring
 Discharge: 2" BSPF (square) c/w membrane and 2" crown cutter, cap and oring. Manufactured under the following conditions:-
 Metano is a **BRC grade A** approved manufacturer, certified to BRC Global Standard for Packaging and Packaging Materials (High Hygiene) Issue 4. The products are produced in a validated ISO8 clean room.



Volume	500
Ply	3
Inner	1 x 1900mm LLDPE Clear
Inner Micron	60mu +/- 10%
Outer	1 x 1900mm LLDPE Clear
Outer Micron	60mu +/- 10%
Int	1 x 1900mm MET-PET 32/12/38
Int Micron	60mu +/- 10%
Dimension A	2164
Dimension B	1854
Dimension C	450
Dimension D	Centre
Dimension E	Centre Line
Destruction Test	1 in 100
Gland Weld Width	2 x 6mm
Liner Weld Width	8mm

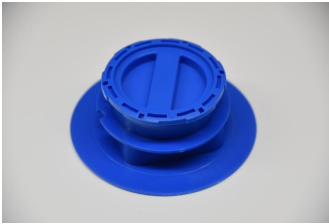


Metano Limited. Units 14/15 Winfield Industrial Estate
Rowlands Gill, Tyne & Wear, United Kingdom. NE39 1EH
T: +44 (0) 01207 549 448 F: +44 (0) 01207 549 447
E: sales@metano.com W: www.metano.com



2" Gland Assembly - FILL
Comprises of
MET0000208 2" BSP Male Plug (Blue) LLDPE
MET0000194 2" Blue Nitrile 'O' Ring 53.64mm x 2.62mm
MET0000241 2" BSP Female Square Gland BLUE LLDPE

MET0000261



2" Discharge Gland Assembly (with membrane).
Comprises of
MET0000208 2" BSP Male Plug (Blue) LLDPE
MET0000194 2" Blue Nitrile 'O' Ring 53.64mm x 2.62mm
MET0000180 2" Crown Cutter (Blue)
MET0000263 2" Membrane blank LLDPE Laminate 112mu (BLUE)
MET0000241 2" BSP Female Square Gland BLUE LLDPE

MET0000262