

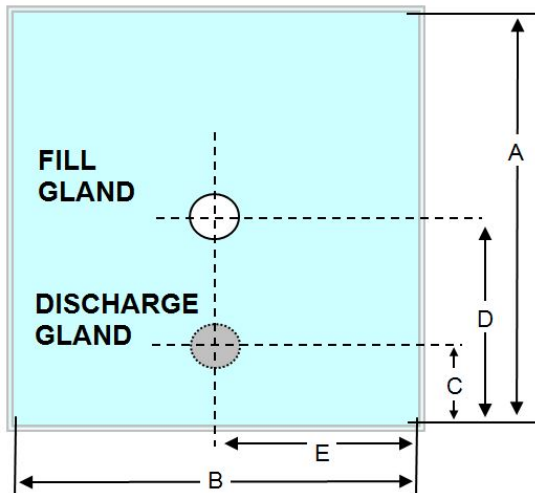


Part Number MET0000447

1000 LTR 3 PLY, 2 x 60mu LLDPE (inner and intermediate) 1 x 60mu EVOH (outer). 1% Blue Tint
 Fill gland: 1" Aseptic Fill with 600mm x 350mm trunk
 Discharge: 2" Butterfly Valve DN50 thread (square) c/w cap, oring and folding handle.

Metano is a **BRC grade A** approved manufacturer, certified to BRC Global Standard for Packaging and Packaging Materials (High Hygiene) Issue 4. The products are produced in a validated ISO8 clean room.

Description



Volume	1000Ltr
Ply	3
Inner	1 x 2200mm LLDPE
Inner Micron	60mu +/- 10%
Outer	1 x 2200mm EVOH
Outer Micron	60mu +/- 10%
Int	1 x 2200mm LLDPE
Int Micron	60mu +/- 10%
Dimension A	3535
Dimension B	2140
Dimension C	600
Dimension D	3435 (100MM FROM TRUNK TOP)
Dimension E	Centre Line
Destruction Test	1 in 100
Gland Weld Width	8mm
Liner Weld Width	8mm

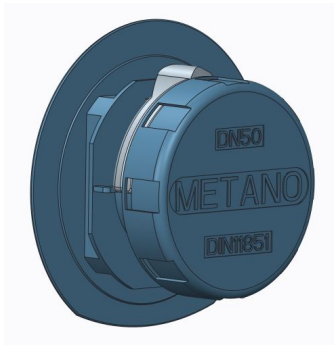


Metano Limited. Units 14/15 Winfield Industrial Estate
Rowlands Gill, Tyne & Wear, United Kingdom. NE39 1EH
T: +44 (0) 01207 549 448 F: +44 (0) 01207 549 447
E: sales@metano.com W: www.metano.com



1 Inch Aseptic fill gland

MET0000413



DN50 Disposable Butterfly Valve LLDPE Blue

MET0000441



2" Combo Clip.

MET0000089